



Koenig London

5th Floor South, 150 Minories, London EC3N 1LS,

Centre Manager – Mr. Shkelzen Sadiku +44 7391 233 590

Google Location – <https://maps.app.goo.gl/Q4B26PDMkEmFUnUz8>

Nearest Tube Station – Tower hill station

Car Parking- Available



Accommodation Options	Category	Cost	Distance to center
Yotel London Shoreditch	3 Star	USD 180	3 Kms. Connected by tube,
Premier Inn (Old Street, Farringdon) / Point A , Liverpool Street	3 Star	USD 210	2.5 Kms. Connected by tube,
Britannia International Hotel	4 star	USD 200	6 Kms. Connected by tube,
Double Tree By Hilton – Tower of London	5 star	USD 270	1.5 Kms. Connected by tube,



Tourist Attractions

The British Museum

The Tate Modern

The Tower of London

The Natural History Museum

Buckingham Palace

The Victoria and Albert Museum

The Houses of Parliament and Big Ben

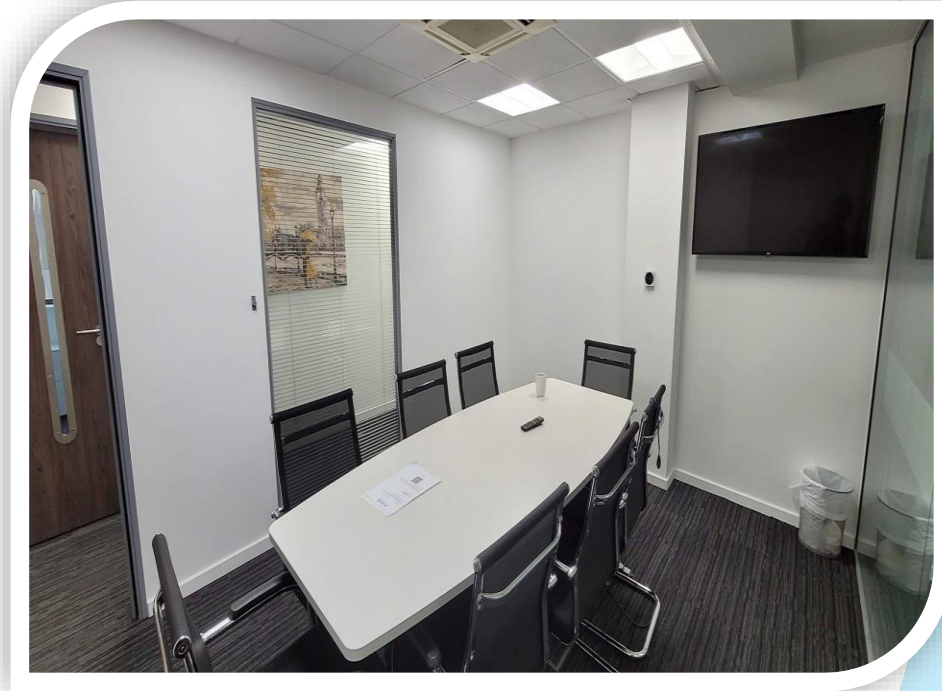
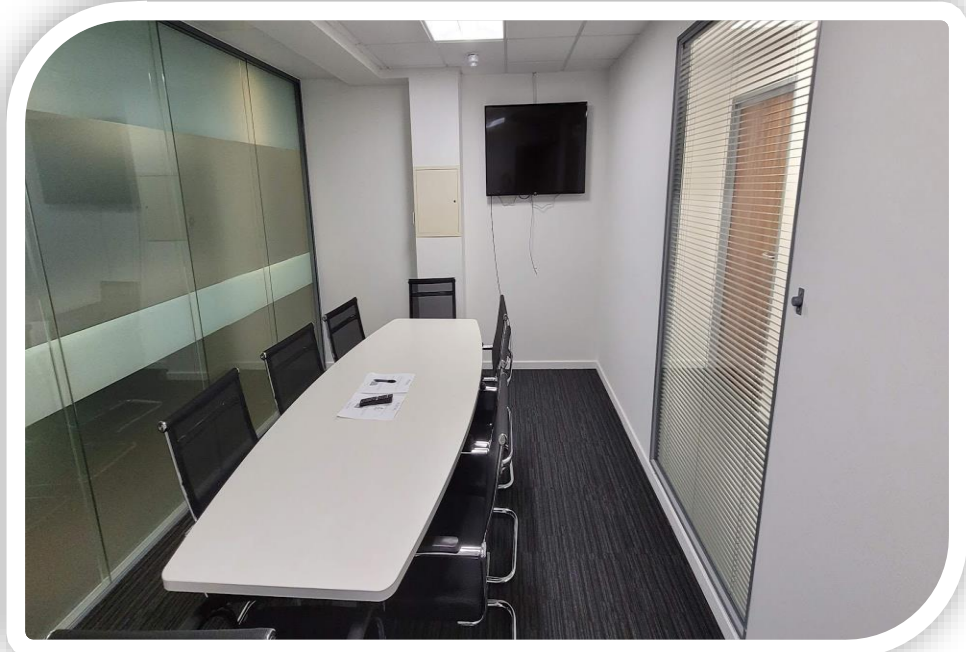
The National Gallery

The London Eye

Covent Garden



Classroom Pictures





Centre Picture



Visa Process, Costing, Timeline and Associated Countries

Country Name	Geo Name/Continent	Visa/Passport
United Kingdom Country Code : GB TimeZone Name : GMT Standard Time Offset Value : +00:00 Flag : GBP	Advanced / Europe Distance : NA Country Language : English Salutation : Hello	Visa Cost : 17500 Visa on Arrival Out : No Visa Currency : INR (INR) Long Term Visa Required : Yes Visa Stamped : Yes Multiple Entry Visa Possible : Yes Physical Passport Required : Yes Physical Passport Required # of Days : 25 Normal Processing Time : 25 to 30 working days

Visa Type	Associated Country
Business Visa	Philippines, Saudi Arabia, Egypt